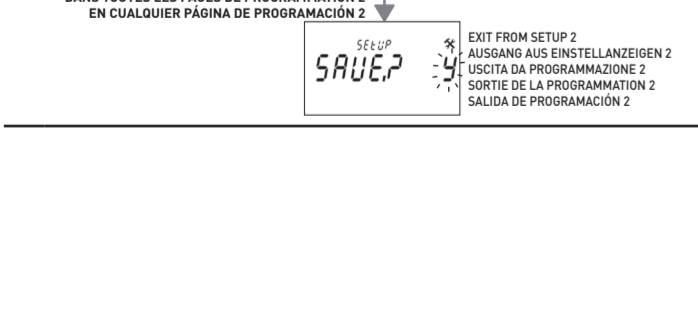
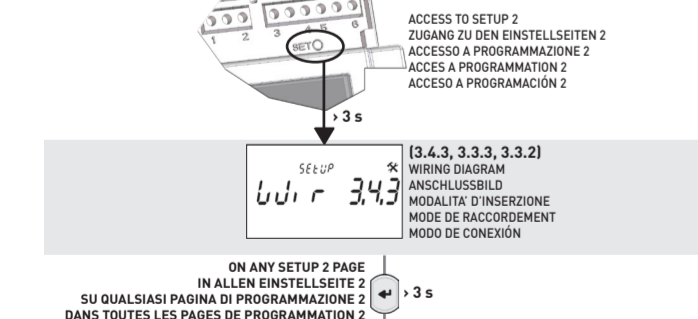
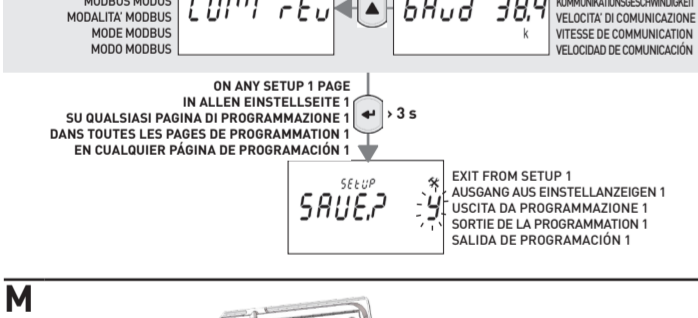
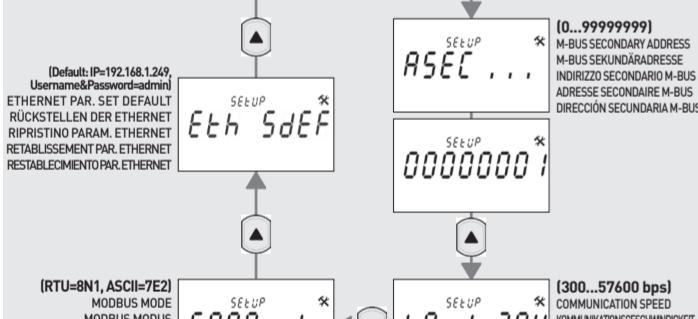
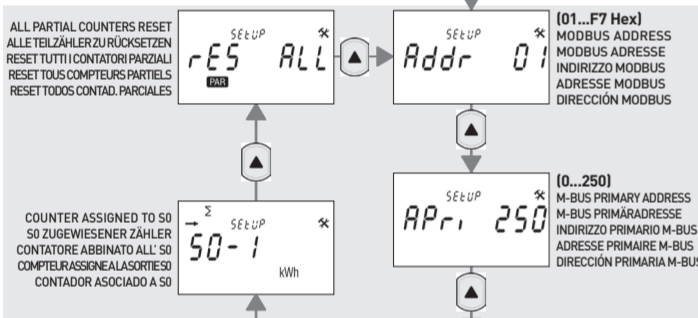
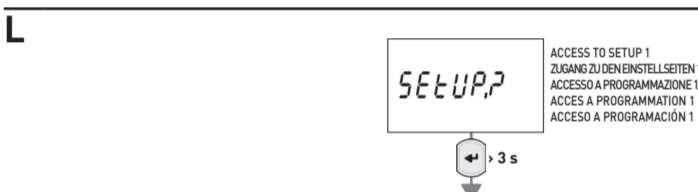
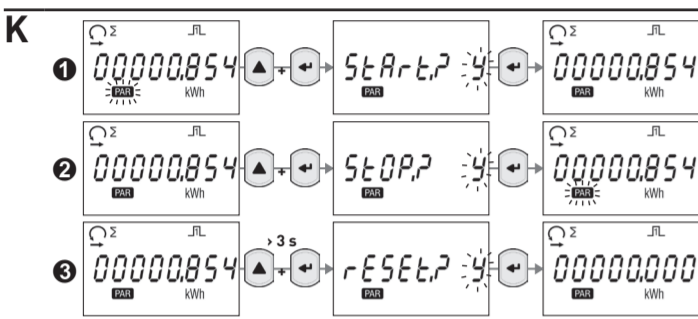
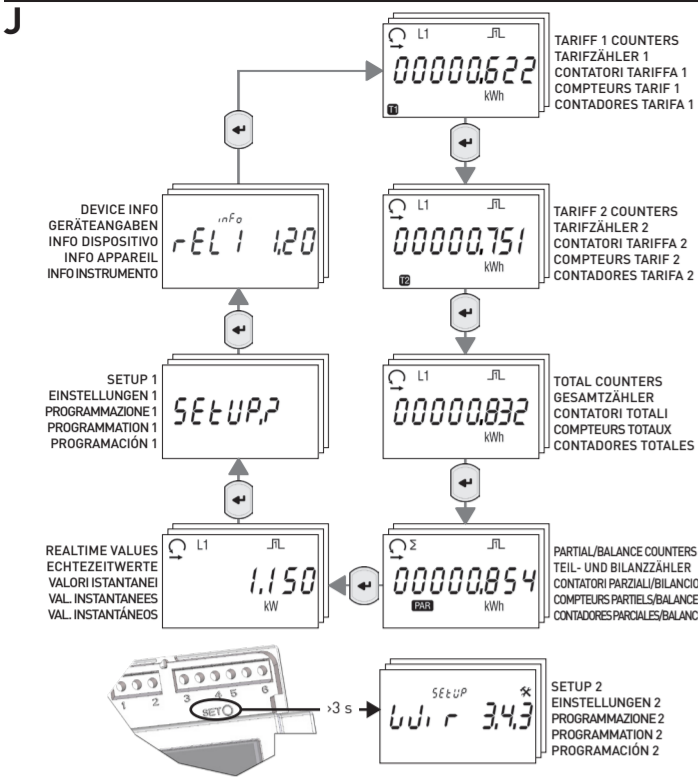




PICTURE/ABBILDEN/FIGURA/FIGURE/IMAGEN



EN - 80A THREE PHASE ENERGY METER

Table with columns: BALANCE COUNTER, FORMULA, and values for kWh, kWh ind, kWh cap, kWh ind, kWh cap.

Table with columns: KEY FUNCTIONS, HOW TO, WHERE, KEY, PRESSE TIME, and descriptions of functions like Scroll loops, Access to pages, Change a value/digit, etc.

Up to 9 page loops can be displayed (refer to picture J). Some loops can be unavailable according to the device model.

HOW TO START / STOP / RESET PARTIAL COUNTERS
Functions available only on partial counter pages.

SETUP PAGES (pictures L, M)
Setup 2 and some setup pages can be unavailable according to the device model.

Table with columns: INFO PAGES, Up to 6 pages can be displayed to show details about, and list of info pages like Metering mode, User interface, etc.

TECHNICAL FEATURES

Table with columns: GENERAL, POWER SUPPLY, CURRENT, ACCURACY, COMMUNICATION, SB OUTPUT, TARIFF INPUT, METROLOGICAL LED, WIRE SECTION, ENVIRONMENTAL CONDITIONS, INTERNAL USE.

DE - 80A DREIPHASIGER ENERGIEZÄHLER

Table with columns: BILANZZÄHLERWERTE, FORMEL, and values for kWh, kWh ind, kWh cap, kWh ind, kWh cap.

Table with columns: TASTENFUNKTIONEN, FUNKTION, W/D, WIE LANG, TASTE, and descriptions of functions like Scrollen, Zugang zu den Einstellseiten, etc.

Up to 9 Seiten/Gruppen können angezeigt werden (siehe Bild J). Einige Gruppen können je nach Gerätetyp nicht vorhanden sein.

TEILZÄHLER STARTEN / SPERREN / RÜCKSETZEN
Die Funktion nur bei der Teilzähleranzeige verfügbar.

EINSTELLSEITEN (Bilder L, M)
Einstellseite 2 und einige andere Einstellseiten können je nach Gerätetyp nicht vorhanden sein.

Table with columns: INFO SEITEN, Fino a 6 pagine visualizzabili con le informazioni seguenti, and list of info pages like Modalità di misura, Interfaccia utente, etc.

TECHNISCHE EIGENSCHAFTEN

Table with columns: ALLGEMEIN, HILFSSPANNUNG, STROM, GENAUIGKEIT, KOMMUNIKATION, SB AUSGANG, TARIFFEINGANG, LED METROLOGICO, ANSCHLIESSBARE LEITER UND ANZIEHMOMENT, UMGEBUNGSBEDINGUNGEN, INTERNE ANWENDUNG.

IT - CONTATORE DI ENERGIA 80A TRIFASE

Table with columns: CALCOLO PER I VALORI DEI CONTATORI DI BILANCIO, CONTATORE DI BILANCIO, FORMULA, and values for kWh, kWh ind, kWh cap, kWh ind, kWh cap.

Table with columns: FUNZIONI DEI TASTI, FUNZIONALITÀ, DOVE, TASTO, PRESSIONE, and descriptions of functions like Scorrere i gruppi, Accedere alle pagine, etc.

Sono visualizzabili fino a 9 gruppi di pagine (vedere figura J). Alcuni gruppi potrebbero non essere disponibili a seconda del modello di dispositivo.

AVVIARE / FERMARE / AZZERARE I CONTATORI PARZIALI
Funzione disponibile solo sulle pagine dei contatori parziali.

PAGINE PROGRAMMAZIONE (figure L, M)
La Programmazione 2 e alcune pagine di programmazione potrebbero non essere disponibili a seconda del modello di dispositivo.

Table with columns: PAGINE INFO, Fino a 6 pagine visualizzabili con le informazioni seguenti, and list of info pages like Modalità di misura, Interfaccia utente, etc.

CARATTERISTICHE TECNICHE

Table with columns: GENERALI, ALIMENTAZIONE, CORRENTE, PRECISIONE, COMUNICAZIONE, USCITA SB, INGRESSO TARIFFA, LED METROLOGICO, SEZIONE FILI, CONDIZIONI AMBIENTALI, USO INTERNO.

FR - COMPTeur D'ENERGIE TRIPHASE 80A

Table with columns: CALCUL POUR LES VALEURS DES COMPTEURS BALANCES, COMPTEUR BALANCE, FORMULE, and values for kWh, kWh ind, kWh cap, kWh ind, kWh cap.

Table with columns: FONCTIONS DES TOUCHES, FONCTIONS, OÙ, TOUCHES/PRESSION, and descriptions of functions like Faire défiler les groupes, Accéder aux pages, etc.

Les pages à l'apparat sont partagées en 8 groupes (voir la figure J). Certaines groupes pourraient n'être pas disponibles selon le modèle de l'appareil.

DEMARER / ARRETER / METTRE A ZERO LES COMPTEURS PARTIELS
Fonction disponible seulement pour les pages des compteurs partiels.

PAGES PROGRAMMATION (figures L, M)
La Programmation 2 et certaines pages de programmation pourraient n'être pas disponibles selon le modèle de l'appareil.

Table with columns: PAGES INFO, Jusqu'à 6 pages visualisables, contenant les détails suivantes, and list of info pages like Mode de mesure, Interface utilisateur, etc.

CARACTERISTIQUES TECHNIQUES

Table with columns: GÉNÉRAL, ALIMENTATION, CORRIENT, PRÉCISION, COMMUNICATION, SORTIE SB, ENTRÉE TARIFF, LED MÉTROLOGIQUE, SECTION CÂBLE, CONDITIONS ENVIRONNEMENT, UTILISATION À L'INTÉRIEUR.

ES - CONTADOR DE ENERGÍA 80A TRIFÁSICO

Table with columns: CÁLCULO DE LOS VALORES DE LOS CONTADORES DE BALANCE, CONTADOR DE BALANCE, FORMULA, and values for kWh, kWh ind, kWh cap, kWh ind, kWh cap.

Table with columns: FUNCIONES DE LAS TECLAS, FUNCIONES, DÓNDE, TECLA, PRESIÓN, and descriptions of functions like Desplazar los grupos, Acceder a las páginas, etc.

Algunas funciones están disponibles según el modelo de instrumento.

INICIAR/PARA/PONER A CERO LOS CONTADORES PARCIALES
Función disponible sólo en las páginas de los contadores parciales.

PÁGINAS PROGRAMACIÓN (figuras L, M)
La Programación 2 y algunas páginas de programación podrían no estar disponibles según el modelo del instrumento.

Table with columns: PÁGINAS INFO, Hasta 6 páginas visualizables con la información siguiente, and list of info pages like Modo de medición, Interfaz usuario, etc.

CARACTERÍSTICAS TÉCNICAS

Table with columns: GENERALES, ALIMENTACIÓN, CORRIENTE, PRECISIÓN, COMUNICACIÓN, SALIDA SB, ENTRADA TARIFA, LED METROLOGICO, SECCIÓN CABLE, CONDICIONES AMBIENTALES, USO INTERNO.