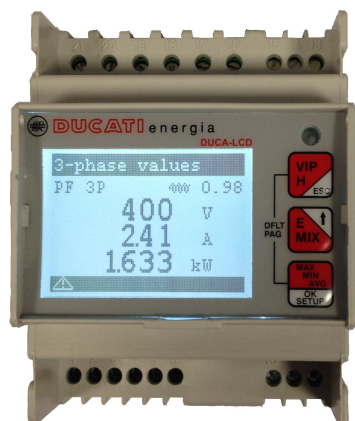


# New Multifunction-meter **DUCATI**



## Codes:

DUCA-LCD	468001304
DUCA-LCD 485	468001300
DUCA-LCD ETH	468001305

## DUCA-LCD

- DIN rail mounting version (**4 modules**)
- Large white-backlit graphic LCD (128x80)
- Frontal red led for the reporting of energy pulses or alarms
- Simple user interface, thanks to the 3 navigation keys with quick access menu
- User-selectable backlight intensity level
- 4 measurements simultaneously displayed
- Possibility to set the display mode “single-measure”, to have only 1 measurement displayed in large font for better visibility from afar
- 218 displayed measurements on multiple pages
- User selectable default displayed page
- Current and voltage harmonic measurement up to 31-th order
- Max-demand measurement
- Measurement accuracy, class 1
- Accuracy of primary measurements: 0,5%
- High accuracy thanks to “over sampling” techniques and automatic calibration process
- Current measurements using internal shunts
- Automatic detection of CTs current flow for easy installation
- Auto test for quickly insertion check
- Easy setting of CT/VT ratio
- Cogeneration mode selectable (2 or 4 quadrants) with separate counters and full instant balance indication
- Indication of partial energy for monitoring industrial processing cycles
- Energy conversion to money (€) and CO<sub>2</sub> production (also in cogeneration mode)
- 2 pulse outputs selectable as energy pulses or alarm outputs on 35 measures
- 2 isolated pulse inputs for energy reading from external counters in different configurations
- Especially suitable for an easy remote reading of external counters
- User selectable operation mode based on insertion-type (single-phase, three-phase, balanced three-phase, generic)
- User-Password protection
- User-selectable interface language
- Free-running timer for instrument “life-time” and count-down timer for “process working-time” (programmable counting threshold)
- Wide range power supply 24 ÷ 240VAC/DC (48 ÷ 240VAC/DC for DUCA-LCD ETH model)
- RS-485 interface: ASCII-Ducati and Modbus-RTU protocols user selectable (only for DUCA-LCD 485 model)
- Ethernet interface with built-in Web Server and Modbus-TCP communication protocol, Ethernet RJ45 insulated interface connector with auto MDI / MDIX crossover functionality (only for DUCA-LCD ETH model)

Rev. C



**DUCATI** energia

**DUCATI** energia s.p.a.

Via M. E. Lepido, 182 - 40132 Bologna (BO) - ITALY

Tel. +39.051.6411.511 - Fax 39.051.6411.692

Web: [www.ducatienergia.com](http://www.ducatienergia.com) - E-mail: [info@ducatienergia.com](mailto:info@ducatienergia.com)