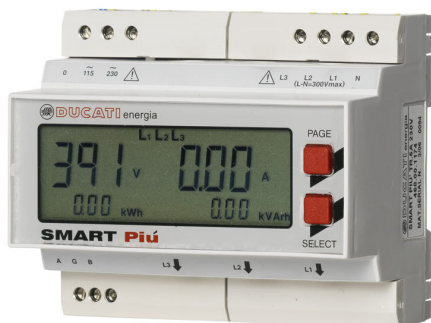


The well-known **DUCATI** analysers



Smart Più

Code – 468 00 1174 – 5 A
 Code – 468 00 1175 – 5 A 2P Model
 Code – 468 00 1225 – 1 A
 Code – 468 00 1227 – 50 A



Smart 96 Più

Code – 468 00 1187 – 5 A
 Code – 468 00 1188 – 5 A 2P Model
 Code – 468 00 1226 – 1 A
 Code – 468 00 1228 – 50A

- 96x96 panel mounting or DIN rail mounting (6 modules) versions featuring equal performance
- 43 displayed measurements and 74 measurements through protocol
- Large backlit LCD display
- 2 keys for ease of use
- Measurements: current, voltage, power, CosPHI (P.F.), energy and other parameters
- Measurement accuracy: class 0.5
- Accuracy of primary measurements: 0.25%
- V.T. with transformation ratio programmable from 1 to 500
- C.T. ".5A" with transformation ratio programmable from 1 to 1,250
- Also available 1A and 50A models. The 50A model avoids to use external C.T.s in small/medium applications
- Continuous display of active and reactive (or apparent) energy counters
- Indication of partial energy for monitoring industrial processing cycles (user-selectable)
- Automatic detection of current direction flow for easy installation
- User-friendly interface (easy setup, quick page up-down scroll, etc.)
- Users selectable display default page
- Password set by user for programming protection
- User-selectable operation modes: single-phase/three-phase/balanced three-phase
- Available protocols: ASCII **Ducati** and MODBUS-RTU
- Protocol *Broadcast* special commands for easy management of the analyser network
- Selectable 230-240V A.C., 115-120 V A.C. Power supply
- 2 pulsed outputs – selectable as energy pulses or alarm outputs on 34 measures (*feature available only on 2P models codes 468 00 1175 and 468 00 1188*)
- RS485 interface with galvanic insulation for remote data acquisition
- ThdF measurement for distortion on voltage and current with % or absolute display mode
- "Load switch-off" function using a special forecast algorithm (*feature available only on 2P models codes 468 00 1175 and 468 00 1188*)
- Firmware upgrade thanks to the Flash-EPROM



DUCATI energia

DUCATI energia s.p.a.

Via M. E. Lepido, 182 - 40132 Bologna (BO) - ITALY

Tel. +39.051.6411.511 - Fax 39.051.6411.692

Web: www.ducatienergia.com - E-mail: info@ducatienergia.com